



# GAT MONTHLY MEMBERSHIP PROGRESS REPORT

Results as of: 8/31/2022

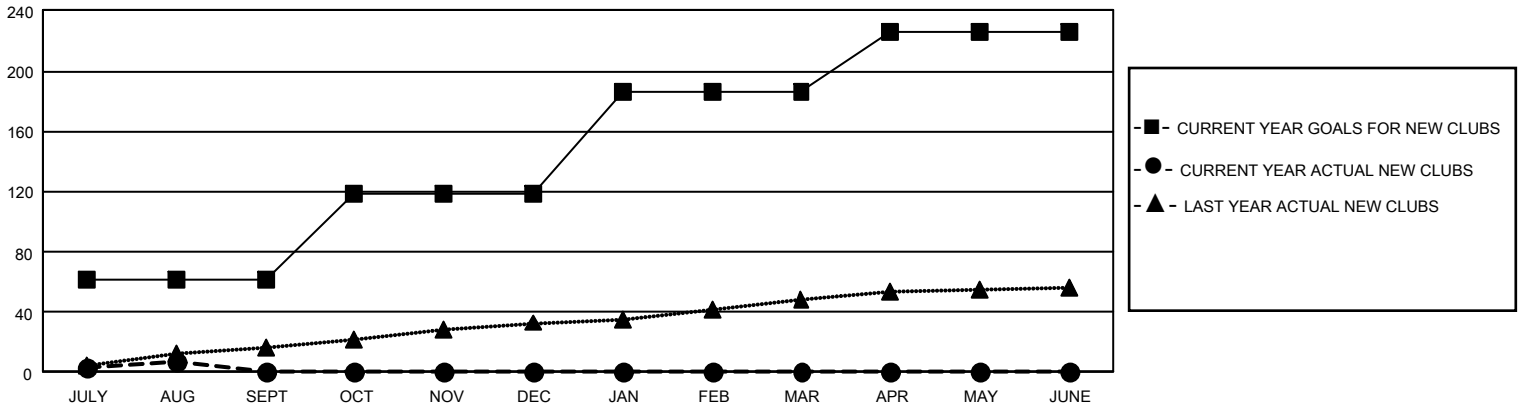
## GAT Constitutional Area 5 - Korea

REPORT DOES NOT INCLUDE CLUBS IN UNDISTRICTED AREAS.

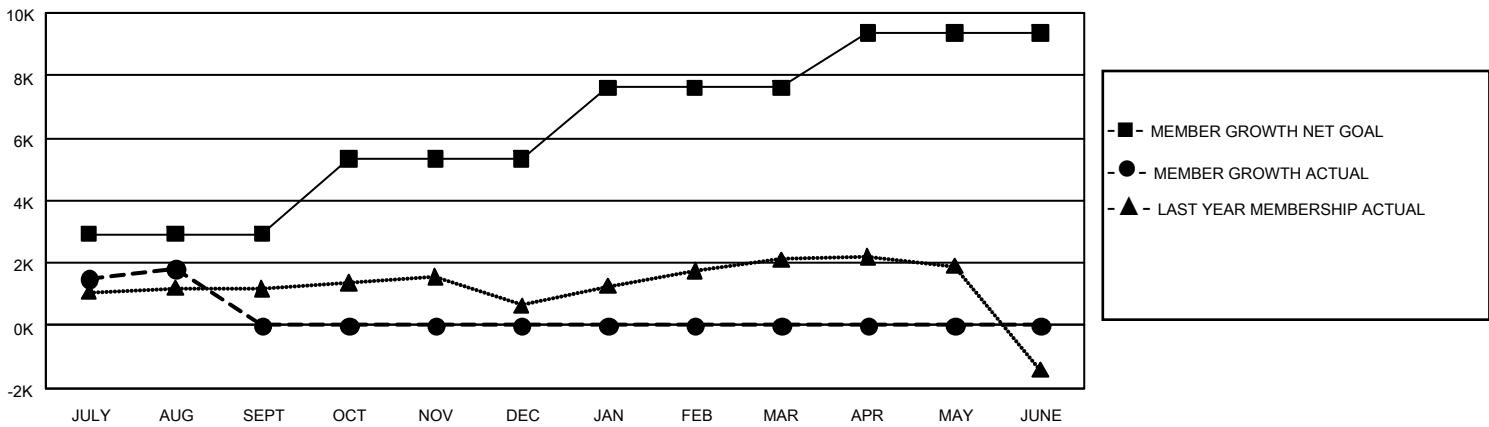
Clubs			
RESULTS FOR 2022-2023			
QUARTER	NEW CLUB GOAL	NEW CLUBS	DROPPED CLUBS
JULY/AUG/SEPT	183	7	12
OCT/NOV/DEC	174	0	0
JAN/FEB/MAR	201	0	0
APR/MAY/JUNE	120	0	0

Members			
RESULTS FOR 2022-2023			
QUARTER	MEMBER GROWTH NET GOAL	MEMBER GROWTH ACTUAL	DROPPED MEMBERS ACTUAL (including transfers)
JULY/AUG/SEPT	2925	3,803	1,823
OCT/NOV/DEC	2400	0	0
JAN/FEB/MAR	2293	0	0
APR/MAY/JUNE	1738	0	0

GOALS AND ACTUAL NEW CLUBS CUMULATIVE



GOALS AND ACTUAL MEMBERS CUMULATIVE



DROPPED CLUBS: 12	
<b>DROPPED MEMBERS</b>	
DECEASED	41
CLUB CANCELLED	17
OTHER	1,765
<b>TOTAL</b>	<b>1,823</b>

909 CLUBS OF 2,044 ADDED 1 OR MORE NEW MEMBERS

[CLICK HERE FOR CUMULATIVE MEMBERSHIP DATA](#)

GENDER DISTRIBUTION	
MALE	55,142 (74.71%)
FEMALE	18,664 (25.29%)
NON BINARY	0 (0.00%)
PREFER NOT TO ANSWER	0 (0.00%)
TOTAL FAMILY UNIT MEMBERS	4,882
FAMILY MEMBERS PAYING HALF DUES	2,818